

无线CarPlay & Android Auto & 百度CarLife
Wireless CarPlay & Android Auto & CarLife

厂家直销 ·
Manufacturer ·
无损安装 ·
Non-destructive installation ·
原车升级 ·
Original car upgrade ·
持续免费升级服务 ·
Consistant Free Upgrde Service ·

SIGMA CAR STEREO

Web: <https://sigmacarstereo.com>

Email: info@sigmacarstereo.com

SIGMA carstereo



—— 新老款沃尔沃 VOLVO

智能车载互联系统使用说明书

INTELLIGENT VEHICLE INTERACTION SYSTEM



CarPlay



CarLife



AndroidAuto



Front/Rear/360



Mirroring



AHD HD video protocol



USB video



DSP Power amplifier chip



Super Fast Charging

• CarPlay

iPhone内置的车载交互系统配合中央控制旋钮按键车载语音控制电话、信息、导航、音乐与Siri语音互动获取更多信息；支持无线和有线连接

The iPhone's built-in car-machine interaction system works with the central control knob button to operate the voice control phone, information, navigation, music and Siri voice interaction for more information; supports wireless and wired connections to CarPlay

• CarLife

百度公司开发的车载互联系统，支持安卓设备连接，CarLife内置的“小度”语音控制系统控制电话、信息、导航、音乐、支持无线和有线连接

The car and machine care system developed by Baidu, supports the connection of iPhone and Android devices, voice control of telephone, information, navigation, and music; built-in "Xiaodu" voice control system, supports wireless and wired connections

• AndroidAuto

Google公司开发的原生态Android车机交互系统，语音控制电话、信息、导航、音乐，支持无线和有线连接

The original ecological Android car-machine interaction system developed by Google, voice control phone, information, navigation, music built-in voice control system;

• Front/Rear/360

智能模块可解码视讯，并配置前视、后视（支持智能动态轨迹和雷达显示）、右侧盲区和360全景

The intelligent module can decode video, and can be equipped with front view, rear view (support display intelligent dynamic trajectory and radar), right view and 360 panoramic view

• Mirroring

支持苹果和安卓手机的有线和无线镜像

Supports wired and wireless screen projection for iPhone and Android phones

• AHD HD video protocol / AHD高清视频解码

支持所有视讯解码AHD高清输入

Added AHD HD rear view/360 video output interface

• USB video / USB多媒体

自动媒体播放功能，可直接插入U盘播放影音媒体

Automatic media playback function, can directly insert U disk to play audio and video media

• DSP Power amplifier chip / DSP 数字音效解码

系统内置数字音效处理单元，让车载音响完美提升

Add DSP power amplifier chip to improve sound quality

• Super Fast Charging / 超级快速充电模式

系统内置智能高效充电处理单元，实现快速充电功能，过载，监测手机充电环境

The system has built-in intelligent and efficient charging processing unit to realize fast charging function, overload protection and monitor the charging environment of mobile phones

工作电压 Operating voltage: 9-16V, 14.4V (rated)	储藏温度 Storage temperature: -30~+85°C
工作温度 Operating temperature: -30~+75°C	环境湿度 Ambient humidity: ≤98% (at45°C) , 65±5% (rated)
功耗电流 Power consumption current: 1A (rated) , 3A (Max)	开机电流 Shutdown current: Current: 300mA (Clock is on)
静态电流 Quiescent current: less than 3mA	
充电电流 Charging current: ≤1.5A, 当USB充电电流 >3A时, 系统快充单元的智能芯片将自动启动电路保护, 将充电电流控制在1.5A以下, 保护手机充电过载 ≤1.5A, when the USB charging current >3A, the host machine should activate the circuit protect function to control the current within 1.5A and avoid products burning	

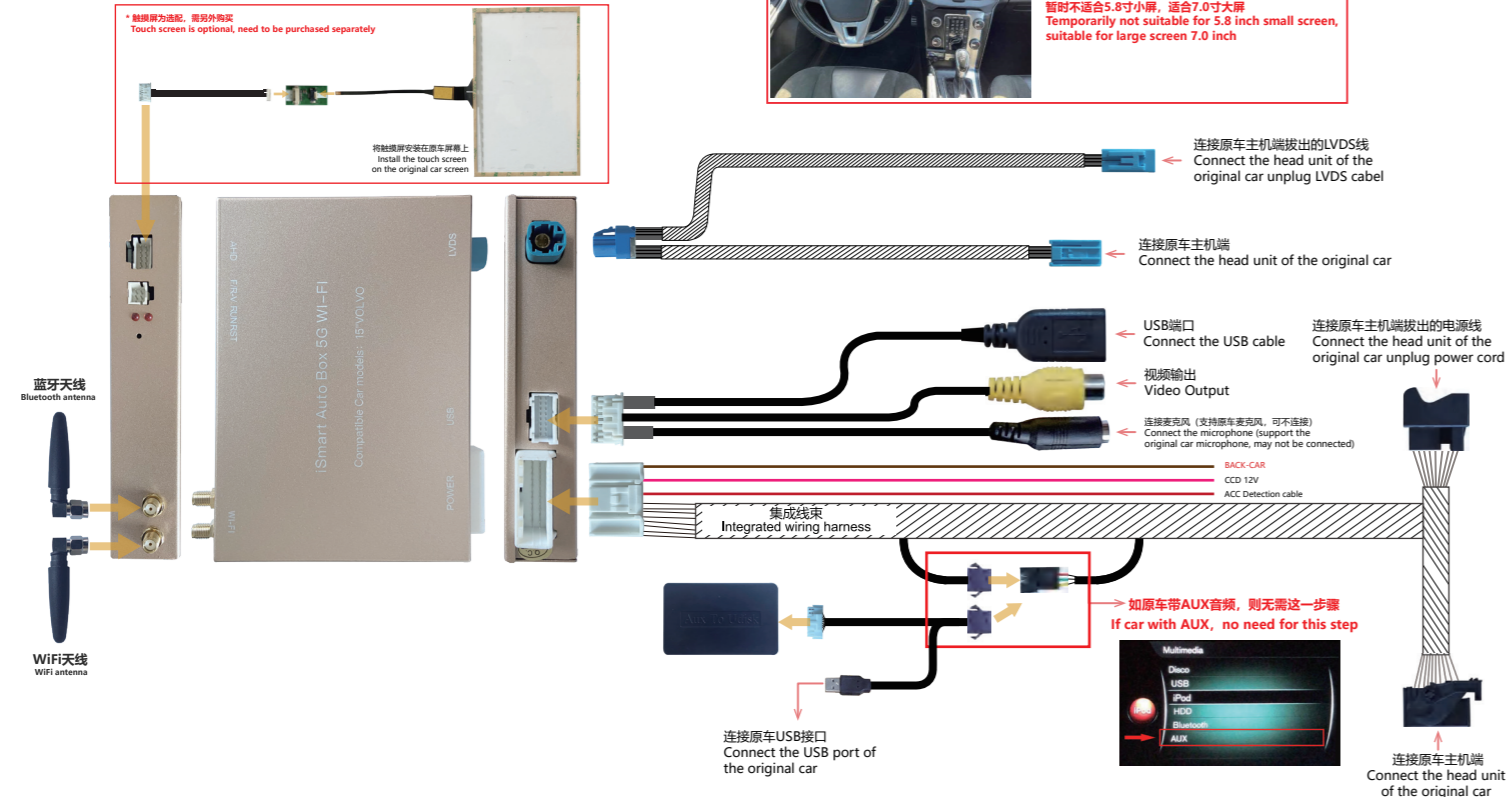
尊敬的用户 Dear user:

非常感谢您使用本公司产品，我们的产品在出厂前已经过严格的功能及性能测试，确保每件产品在良好的状态交给用户。所有产品均享受车载电子三包政策。Thank you for using our products. In order to make sure customers receive product is good, all our products have been strictly tested in our factory before delivery. And all our products enjoy 1 year warranty.

**以下条例将不在免费保修服务范围之内
But following conditions are not covered by warranty:**

- 超过免费保修期限，外观划伤、污损、变形
After the free warranty period, the appearance is scratched, dirty and deformed
- 保修卡和购机凭证与产品型号不符合或者有涂改痕迹的产品
The warranty card and purchase certificate are inconsistent with product model or have altered marks
- 主机机身条形码不清晰或无条形码产品
The bar code of the host machine body is unclear or there is no bar code product
- 未按照产品说明书要求使用、维护、拆修、改装造成损坏的产品
Failure to use, maintain, repair or refit according to the requirements of the product manual causes damage
- 因不可抗力因素损坏（如火灾、水灾、交通事故、雷电、地震等）
Damage due to irresistible factors (such as fire, flood, traffic matters, lightning, earthquakes, etc.).

新款沃尔沃
Volvo 2015-2018



新款沃尔沃
Volvo 2015-2018



06 安装说明 / INSTALLATION INSTRUCTIONS

安装前需要准备的工具 Tools you need to prepare

- 1 * 翘板 panel remover
- 2 * T20螺丝刀 T20 screwdriver
- 3 * T10螺丝刀(一些车型需要使用它拆下手套箱) T10 screwdriver(some car models need it to dis-assembly the glovebox)
4. 胶带和毛巾, 保护饰板和面板以及整理线束 Tape and towel-protect the trim and panel, collect harness

注意: 在安装前确保关闭发动机; 开关一次驾驶室车门并等待屏幕黑屏.

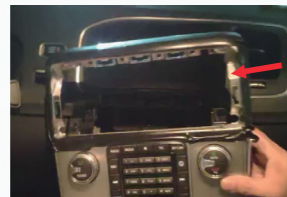
Remark: Make Sure Car Engine Off Before The Installation. Open/Close The Driver Side Door ONCE, Wait Centre Screen Turns Black



1. 使用翘板将空调面板拆下, 注意需要将面板背后的插头拔出
Remove the air-conditional panels and trim via plastic panel remover. (Note to disconnect the connector behind the panel)



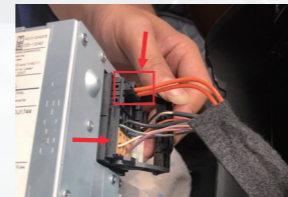
2. 拧出控制面板上的2颗螺丝
Unscrew the 2 screws at the corner



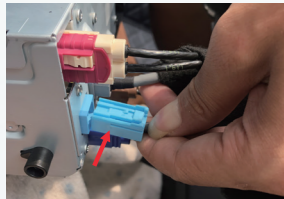
3. 拆下整个控制面板
Remove the whole console control panel



4. 拧出主机上的2颗螺丝后将主机取出
There are 2 screws on multimedia head unit, unscrew them and take out the box



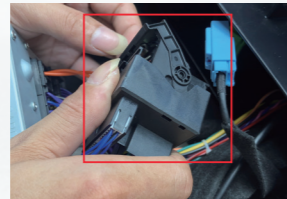
5. 拔出主机背后的48PIN主线, 注意如原车48PIN主线上有光纤线, 需要将光纤线取出
Remove the 48pin connector cable, Note: If there is FIBER cable on original 48pin connector, please remember to remove it.



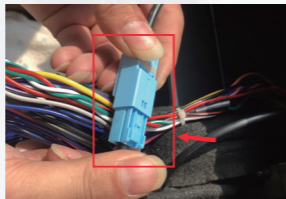
6. 拔出主机背后的视频线 (通常为蓝色的插头)
Remove the LVDS cable (normally blue one)



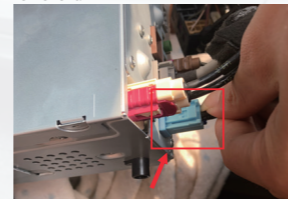
7. 将iSmart CarPlay的48PIN主线接入原车主机上, 并将取出的光纤线转接到iSmart CarPlay的主线上
Insert the iSmart box 48pin connector into multimedia head unit. Insert the original FIBER cable into iSmart 48pins connector.



8. 将iSmart CarPlay的48PIN主线与原车的主线对接
Connect its another side with original car 48pin connector



9. 将iSmart CarPlay的LVDS视频线与原车的视频线对接
Connect iSmart LVDS cable with original car LVDS cable

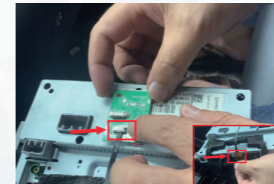


10. 将iSmart CarPlay LVDS视频线的另一端接入原车主机上
Insert another side into multimedia head unit

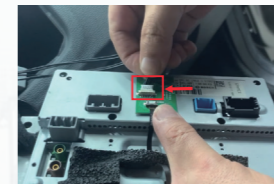
* 非触屏版CarPlay无需以下安装 The non-touch screen version of CarPlay does not require the following installation



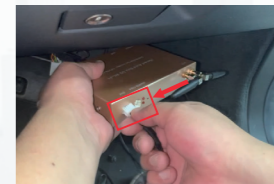
11. 取出CarPlay的触摸屏, 撕开保护膜后粘在原车屏幕上
Take out the CarPlay touch screen, tear off the protective film and stick it on the original car screen



12. 取出触摸屏的PCB板, 将触摸屏的排线连接到PCB板上 (触摸屏的芯片可粘在此处)
Take out the PCB board of the touch screen and connect the cable of the touch screen to the PCB board (the chip of the touch screen can be glued here)



13. 将CarPlay的触屏线连接到PCB板上
Connect the touch screen cable of CarPlay to the PCB board



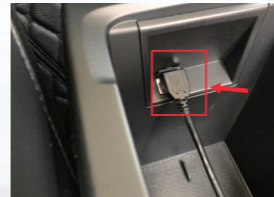
14. 将CarPlay的触屏线连接到盒子上
Connect the touch screen cable of CarPlay to the box



15. 可将iSmart CarPlay的线束从中控引到副驾驶底板的位置上, iSmart CarPlay的盒子可放置在此处
Put all harness through the ACC area to passenger glove box area. Recommend you put iSmart box here



16. 将iSmart CarPlay的主线和LVDS视频线的白色插头连接到盒子上, 连接USB线和天线
Connect the power cable, LVDS cable, and USB cable with iSmart box



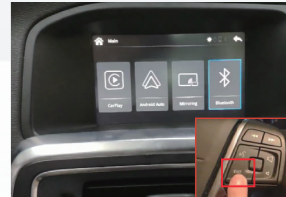
17. 将iSmart CarPlay的AUX转USB模块接入原车的蓝牙接口 (如原车系统有AUX选项, 则跳过此步)
Insert the audio USB-AUX cable into car USB port.(if original car have AUX, omit this step)



18. 安装完成, 还原原车布置。进入原车系统的媒体界面
The installation is finished, put back all panels. Enter the media interface of the original car system.



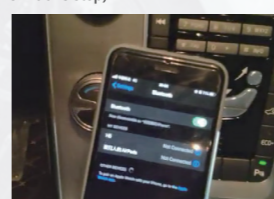
19. 选择iPod. (如果原车有AUX选项, 则选择AUX)
Choose iPod. (If original car have AUX, choose AUX;)



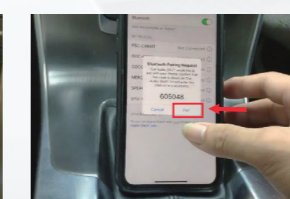
20. 长按方向盘上的EXIT键切换系统
Long press EXIT button on the wheel to switch to carplay interface



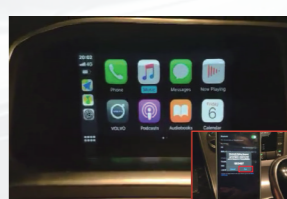
21. 可在CarPlay系统的蓝牙界面查看CarPlay的蓝牙名称等信息
You can check CarPlay's Bluetooth name and other information on the Bluetooth interface of the CarPlay system



22. 打开手机WiFi并保持打开状态, 然后打开手机蓝牙, 搜索并连接CarPlay蓝牙
Open the phone Bluetooth, and keep WIFI on; search and connect CarPlay Bluetooth



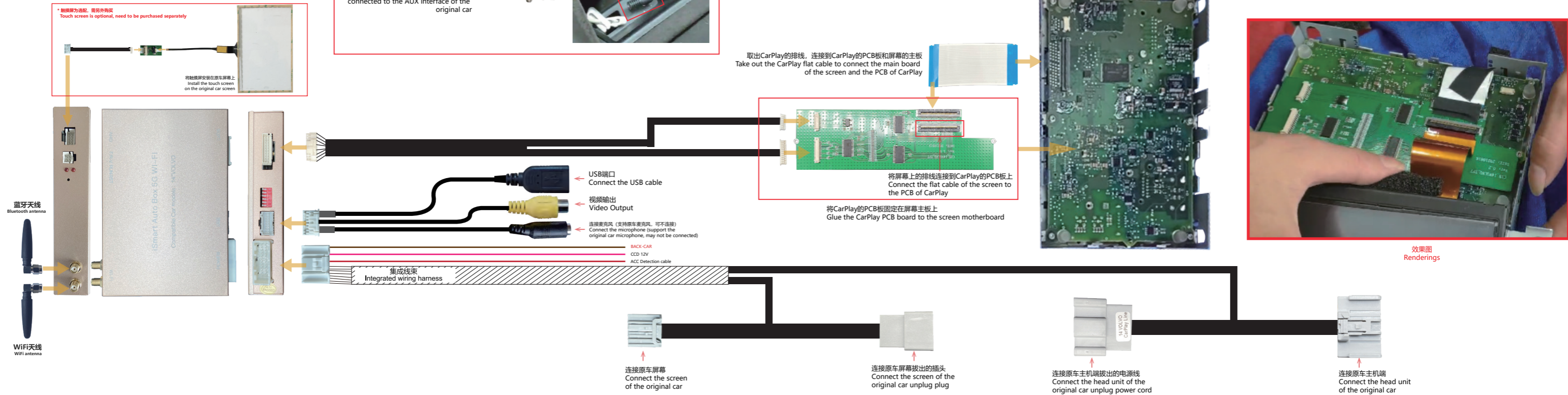
23. 注意留意手机上的弹窗信息, 点击配对
Pay attention to the information in the pop-up window of the mobile phone, click on pairing



24. 手机将弹出信息, 是否使用CarPlay, 点击允许则开始使用无线CarPlay
Phone will ask you whether to use carplay, please choose allow. Carplay connection successes

07 接线图 / CONNECTION DIAGRAM

老款沃尔沃
Volvo 2011-2015



老款沃尔沃
Volvo 2011-2015

上一曲 / 下一曲
Previous song / Next song

唤醒Siri (静音键为老款沃尔沃)
Wake up Siri (Mute button for the old Volvo)

向上是左 / 向下是右 / 按下是确定
Scroll up is left / Scroll down is right / press to confirm

长按切换CarPlay / 原车系统
Long press to switch CarPlay / original car system



控制CarPlay音量
Control CarPlay volume

老款沃尔沃中控台此处为CAM键或空白
The old Volvo center control panel here is the CAM button or blank



左右旋钮功能
Left and right knob function

确定 Confirm

返回 Return

上一曲 / 下一曲
Previous song / Next song

安装前需要准备的工具 Tools you need to prepare

- 1 * 翘板 panel remover
- 1 * T20螺丝刀 T20 screwdriver
- 1 * T10螺丝刀(一些车型需要使用它拆下手套箱) T10 screwdriver(some car models need it to dis-assembly the glovebox)
- 胶带和毛巾, 保护饰板和面板以及整理线束 Tape and towel-protect the trim and panel, collect harness

注意: 在安装前确保关闭发动机; 开关一次驾驶室车门并等待屏幕黑屏.
Remark: Make Sure Car Engine Off Before The Installation. Open/Close The Driver Side Door ONCE, Wait Centre Screen Turns Black



1. 注意面板背后两侧需要将螺丝拧出
Note that there are two screws on the back of the center control panel that need to be unscrewed



2. 使用翘板将空调面板取出, 取出时注意将面板背后的插头拔出
Remove the air-conditional panels and trim via plastic panel remover. (Note to disconnect the connector behind the panel)



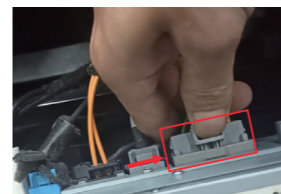
3. 拧出中控面板上的全部螺丝
Unscrew the screws on the center control panel



4. 拆下中控面板, 同样注意将面板背后的插头拔出
Take out the control panel.(Note to disconnect the connector behind the panel)



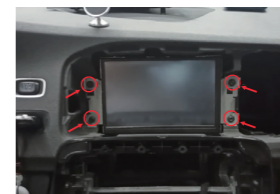
5. 拧出主机上的两颗螺丝
Unscrew the 2 screws on the head unit



6. 取出主机, 并将主机背后的主线拔出
Take out the head unit and unplug the main line behind the head unit



7. 拆下屏幕上的饰板
Remove the trim panel of the screen



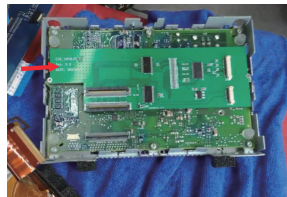
8. 拧出屏幕上的4颗螺丝
Unscrew the screws on the screen



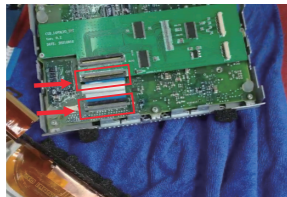
9. 取出屏幕, 并将屏幕背后的全部插头拔出
Take out the screen, unplug all the plugs on the back of the screen



10. 使用工具将屏幕拆开, 注意小心屏幕内部的排线, 并将排线取下
Use tools to disassemble the screen, and take out the flat cable from the screen



11. 取出CarPlay的PCB板，并粘在屏幕的主板上
Glue the CarPlay PCB board to the screen motherboard



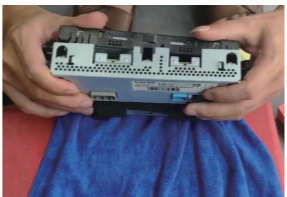
12. 取出CarPlay的排线，连接到CarPlay的PCB板和屏幕的主板
Take out the CarPlay flat cable to connect the main board of the screen and the PCB of CarPlay



13. 将屏幕上的排线连接到CarPlay的PCB板上
Connect the flat cable of the screen to the PCB of CarPlay



14. 将CarPlay的LVDS先连接到PCB板上，并将屏幕原来的排线重新接上
Connect the CarPlay LVDS cable to the PCB board; And reconnect the original flat cable of the screen



15. 还原屏幕
Restore the screen



26. 将CarPlay的WiFi天线和蓝牙天线连接到盒子上；将LVDS线和主线的白色插头连接到盒子上
Connect CarPlay's Bluetooth antenna, WiFi antenna and usb cable to the box; Connect the CarPlay LVDS cable and the white plug of the main cable to the box



27. 注意需要将CarPlay的AUX插头连接到原车的AUX端口上
Note that the AUX plug of CarPlay needs to be connected to the AUX interface of the original car



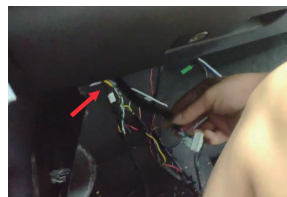
28. CarPlay安装完成，还原原车布置即可
After the installation is complete, you can restore the original car layout



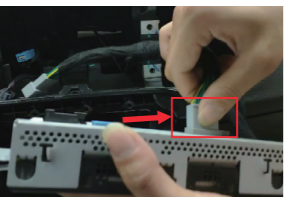
29. 通过原车MEDIA键进入媒体界面，选择AUX
Enter the media interface of the original car system through the MEDIA button, select AUX



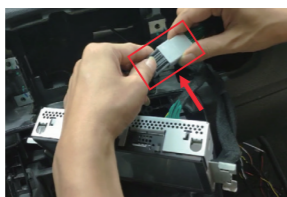
30. 长按方向盘上的EXIT键切换CarPlay系统
Long press the EXIT button on the steering wheel to switch the CarPlay system



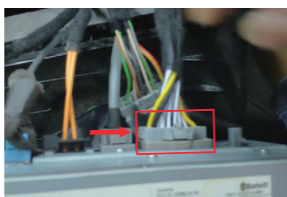
16. 可将CarPlay主线和LVDS线从中控引到副驾驶的地板上
Lead the CarPlay main line and LVDS line from the inside of the screen to the passenger floor



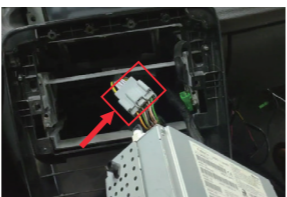
17. 将CarPlay主线上的屏幕转接线连接到原车屏幕上
Connect the screen adapter cable on the CarPlay main line to the screen



18. 并将另一端与原车屏幕插头对接
And connect the other end to the original car's screen plug



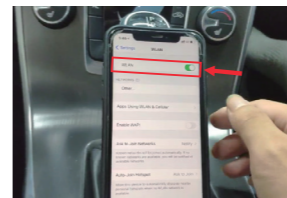
19. 将CarPlay的主线连接到原车主机上
Connect the main line of CarPlay to the original car head unit



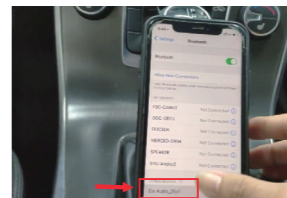
20. 并将另一端与原车主机线对接
And connect the other end to the main line of the original car



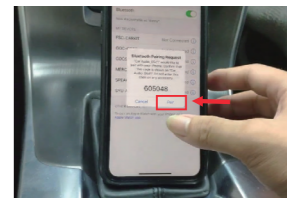
31. 可在CarPlay系统的蓝牙界面查看CarPlay的蓝牙名称等信息
You can check CarPlay's Bluetooth name and other information on the Bluetooth interface of the CarPlay system



32. 手机上打开WiFi，并保持打开状态
Turn on WiFi on the phone and keep it on



33. 打开蓝牙，搜索并连接CarPlay的蓝牙
Turn on Bluetooth, search and connect CarPlay Bluetooth



34. 注意留意手机上的弹窗信息，点击配对Pay attention to the information in the pop-up window of the mobile phone, click on pairing



35. 点击使用CarPlay车载即可享受无线CarPlay
Click to use CarPlay to enjoy wireless CarPlay

* 非触屏版CarPlay无需以下安装 The non-touch screen version of CarPlay does not require the following installation

21. 取出CarPlay的触摸屏，撕开保护膜后粘在原车屏幕上
Take out the CarPlay touch screen, tear off the protective film and stick it on the original car screen

22. 取出触摸屏的PCB板，将触摸屏的排线连接到PCB板上（触摸屏的芯片可粘在此处）
Take out the PCB board of the touch screen and connect the cable of the touch screen to the PCB board (the chip of the touch screen can be glued here)

23. 将CarPlay的触屏线连接到PCB板上
Connect the touch screen cable of CarPlay to the PCB board

24. 将CarPlay的触屏线连接到盒子上
Connect the touch screen cable of CarPlay to the box



25. 将屏幕原来的插头重新插上，还原屏幕
Reconnect the original plug of the screen to the screen, and restore the screen

声音设置 Voice Setting



1. 注意需要将CarPlay的AUX插头连接到原车的AUX接口上
The AUX plug of CarPlay needs to be connected to the AUX interface of the original car



2. 通过原车MEDIA键进入媒体界面，选择AUX
Enter the media interface of the original car system through the MEDIA button, select AUX



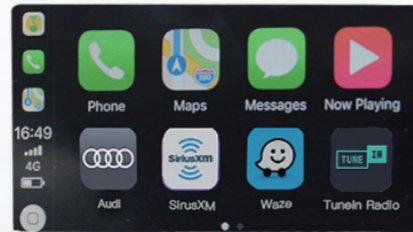
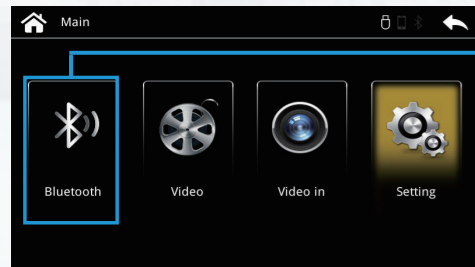
3. 长按方向盘上的EXIT键切换CarPlay系统
Long press the EXIT button on the steering wheel to switch the CarPlay system



4. 连接手机即可享受无线CarPlay
Enjoy wireless CarPlay after connect your phone.

10 无线CarPlay连接方式 / WIRELESS CARPLAY CONNECTION METHOD

选择系统主页面蓝牙图标，进入蓝牙连接页面
Click the 【Bluetooth】 icon in the system main interface to enter the Bluetooth connection interface



*CarPlay支持无线和有线连接
*CarPlay supports wireless and wired connections

无线连接 - 即插即用
Wired connection - Plug & Play

WIRELESS CARPLAY CONNECTION METHOD / 无线CarPlay连接方式 10

1. 开启iPhone无线局域网即可
Turn on the phone WLAN



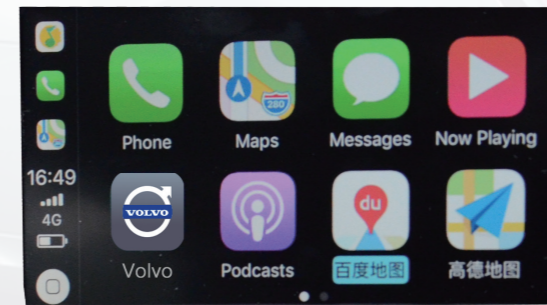
2. 开启蓝牙设备，并搜索系统蓝牙
Search for bluetooth devices



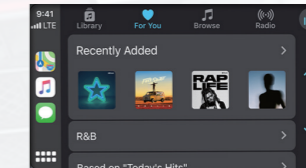
3. 点击允许设备配对
Allow pairing devices



4. 点击允许使用车载CarPlay
CarPlay onboard is allowed



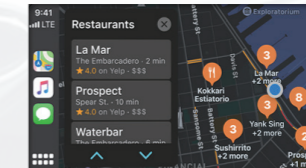
5. CarPlay连接成功即可享受无线CarPlay
CarPlay connection is successful, you can use wireless CarPlay



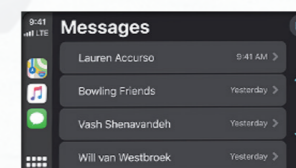
音乐 / Music



电话 / Phone



地图&导航 / Map & Navigation



信息 / Messages

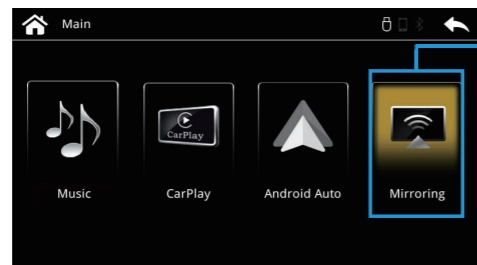
11 iPhone无线Mirroring镜像 / IPHONE WIRELESS MIRRORING

选择系统主页面Mirroring图标，进入Mirroring连接页面

Click the 【Mirroring】 icon in the system main interface to enter the Mirroring connection interface

*注意: 如手机已经连接CarPlay, 需先在手机端断开WiFi

*Note: If the phone is connected to CarPlay, you need to turn on the phone and turn off the WiFi



勾选iPhone手机
Select the phone type as iPhone



1. 开启iPhone无线局域网并搜索CarPlay WiFi; 密码为88888888
Turn on the phone WLAN and connect the current device WLAN; and enter WLAN password: 88888888



2. 进入iPhone快捷界面, 选择屏幕镜像
Enter the iPhone shortcut page, select the device in the Screen Mirroring list



3. 选择并连接Mirroring
Select Mirroring



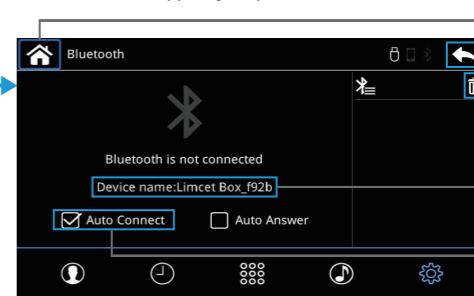
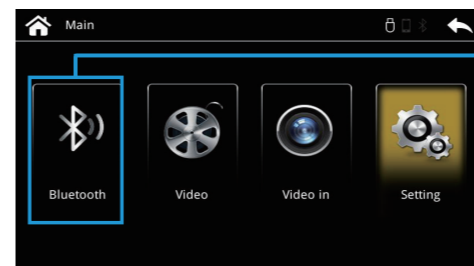
12 WIRELESS ANDROID AUTO CONNECT METHOD / 无线Android Auto连接方式

选择系统主页面蓝牙图标，进入蓝牙连接页面

Click the 【Bluetooth】 icon in the system main interface to enter the Bluetooth connection interface

*在连接使用Android Auto之前, 需要先在手机下载并安装Android Auto APP

* Before connecting to use Android Auto, you need to download and install Android Auto App on your phone in advance



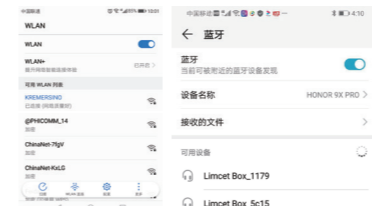
点击回主页 / Home

点击返回上一级页面 / Back

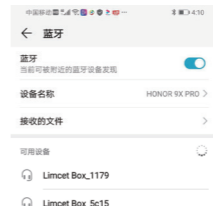
点击删除蓝牙列表名称 / Clear bluetooth list

打开安卓手机蓝牙并连接此设备名称
Turn on Bluetooth on Android and connect this device

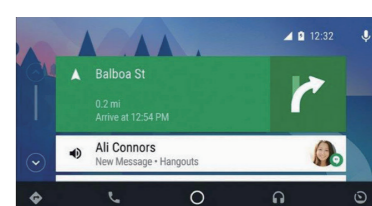
勾选开启下次蓝牙自动连接, 反选取消
Bluetooth automatic connection button



1. 打开手机WiFi并保持打开状态, 然后进入手机蓝牙界面, 搜索并连接设备蓝牙
Turn on the phone WiFi and keep it on, then enter the phone Bluetooth interface, click and connect device Bluetooth



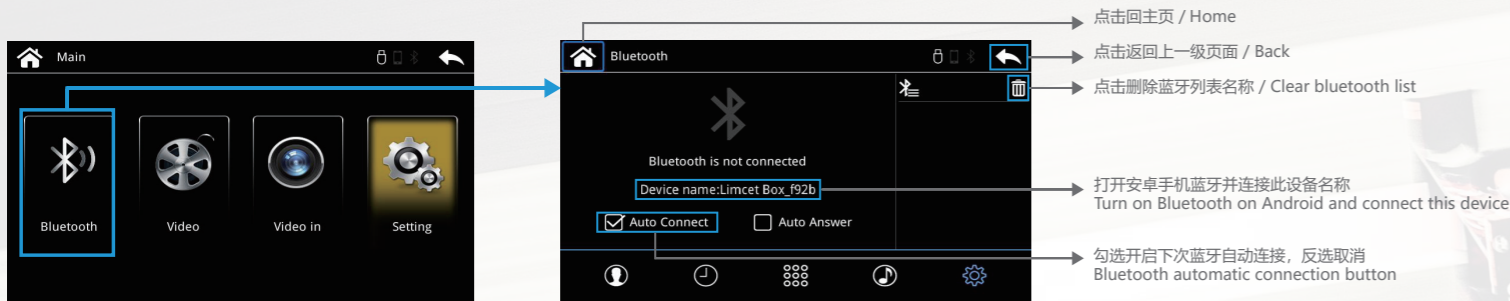
2. 确定使用连接
Confirm use of connection



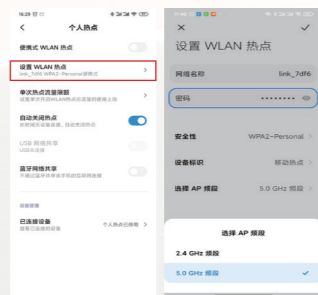
3. 蓝牙连接成功, 打开手机端Android Auto APP系统将自动进行连接; 有线连接即插即用, 无需以上操作
After the Bluetooth connection is successful, it will automatically connect to Android Auto. And the wired connection is plug and play, without the above operations

选择系统主页面蓝牙图标，进入蓝牙连接页面

* 在连接使用百度CarLife之前，需要先在手机下载并安装百度CarLife APP



1. 在系统主页面进入CarLife界面，界面左下角提示需要设置的个人热点名称和密码



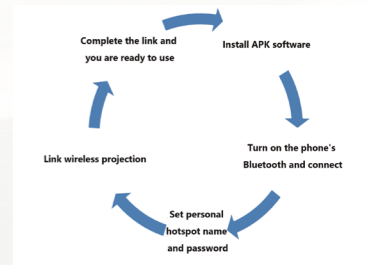
2. 设置“个人热点”名称和密码与“carlife”界面左下角提示的名称和密码一致即可，热点AP频段选择“5.0 GHz 频段”



3. 打开手机端百度CarLife+ APP系统将通过设置好的热点自动进行无线连接；有线连接即插即用，无需以上操作

选择系统主页面Mirroring图标，进入Mirroring连接页面

Click the 【Mirroring】 icon in the system main interface to enter the Mirroring connection interface

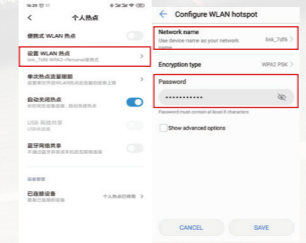


使用安卓无线投屏前，需先下载安装 MLink APP；软件可向供应商索取
To use Android wireless mirroring, you need to download a "MLink" software first, and you can obtain the "Android wireless APK software" from the dealer

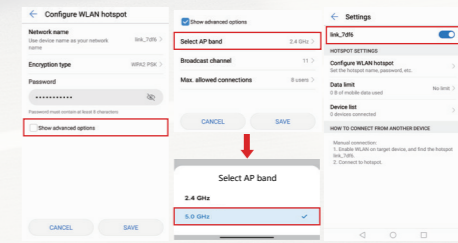
手机端需根据此处的热点名称和密码来设置个人热点
The mobile phone needs to establish a personal hotspot with teammate name and password



1. 打开手机蓝牙，连接设备蓝牙并确认配对
Turn on the phone bluetooth, connect the device bluetooth and confirm use of connection



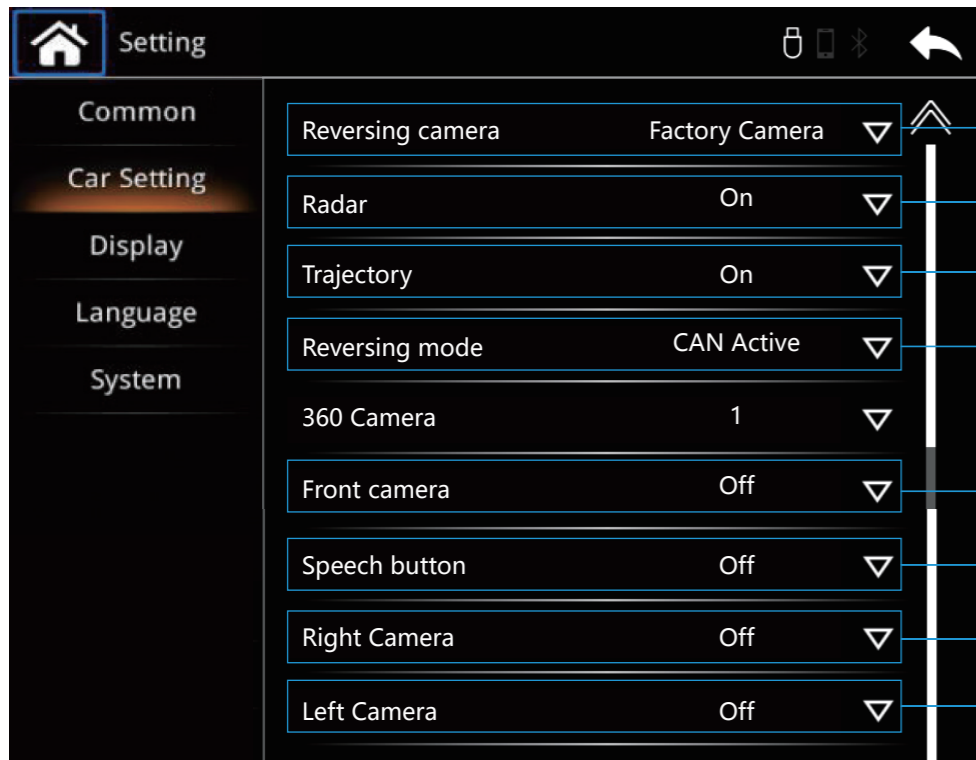
2. 进入手机设置界面，选择个人热点；设置“个人热点”的名称和密码，与“Mirroring”界面提示的名称和密码一致。
Enter the phone settings function and find "Personal Hotspot"; Set the name and password of "Personal Hotspot" to be consistent with the name and password prompted on the "Mirroring" interface.



3. 热点AP频段选择“5.0 GHz频段”；（如果没有该选项，请先勾选“显示高级选项”）然后保存设置并打开“个人热点”开关
Then save the setting and turn on the "Personal Hotspot" switch

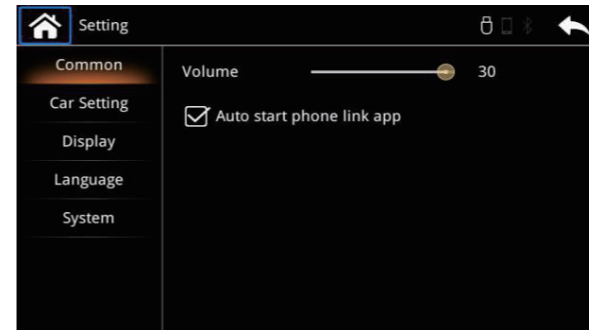


4. 返回手机主界面，打开 MLink 使用无线投屏；有线连接即插即用，无需以上操作
Return to the main interface of the phone and open "MLink" to use wireless mirroring. And wired connection plug and play, without the above operations



- 摄像头选择 Camera selection
- 雷达开关 Radar switch
- 动态轨迹开关 Dynamic track switch
- 倒车模式选择 Reversing detection mode
- 前置摄像头开关 Front camera switch
- 方向盘语音开关 Steering wheel voice button switch
- 右侧摄像头开关 Right camera switch
- 左侧摄像头开关 Left camera switch

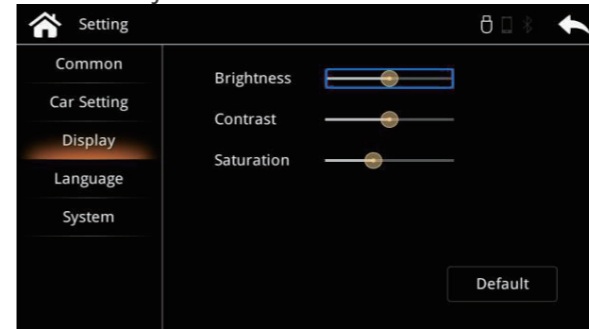
手机自动连接开关
Automatic mobile phone connection switch



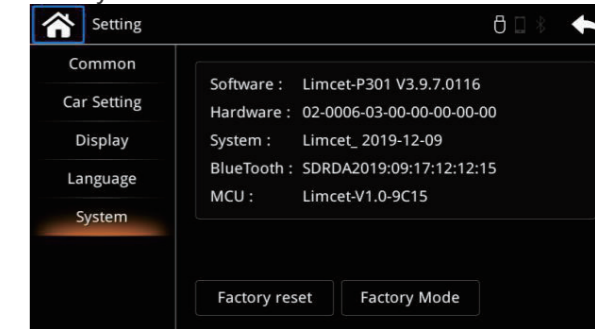
语言选择列表
Language selection



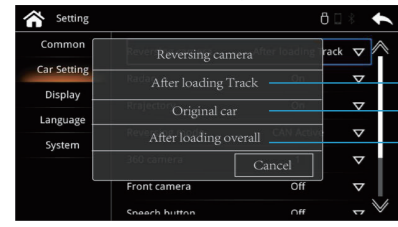
对比度调节
Contrast adjustment



系统信息查看
View system version number

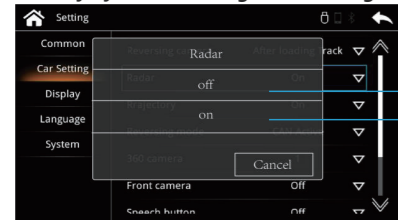


CarPlay系统 - 系统设置 - 原车设置 - 倒车摄像头
CarPlay System - Setting - Car Setting - Reversing cammera



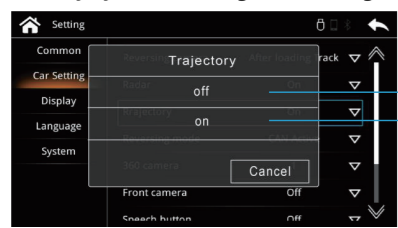
- 如果加装摄像头请选择此项 Please select this if you install a camera
- 如果原车自带摄像头请选择此项 Please select this if the original car with a camera
- 如果加装 360 全景请选择此项 Please select this if you install 360 camera

CarPlay系统 - 系统设置 - 原车设置 - 雷达
CarPlay System - Setting - Car Setting - Radar



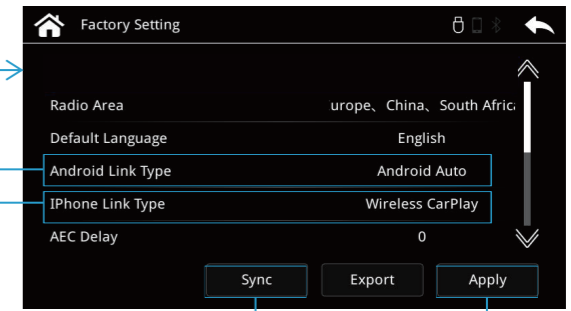
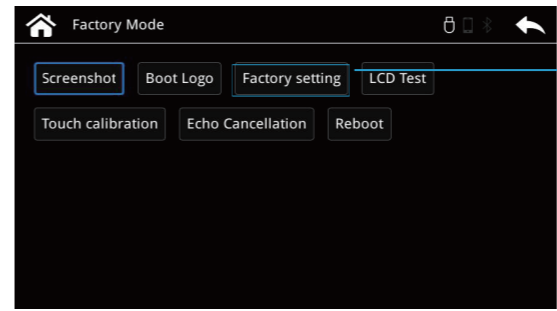
- 加装摄像头界面不显示雷达图标选择此项
The radar is not displayed on the interface of the camera select this option
- 加装摄像头界面显示雷达图标选择此项
The radar is displayed on the interface of the camera select this option

CarPlay系统 - 系统设置 - 原车设置 - 轨迹
CarPlay System - Setting - Car Setting - Trajectory

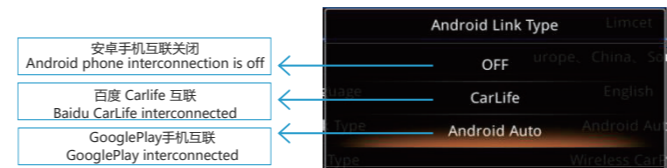


- 加装摄像头界面不显示动态轨迹选择此项
If the camera interface does not display dynamic track, select this option
- 加装摄像头界面显示动态轨迹选择此项
If the camera interface display dynamic track, select this option

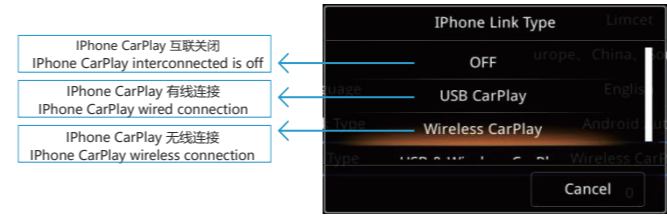
CarPlay系统 - 系统设置 - 系统 - 工厂模式 (密码为: 8818) - 工厂设置
CarPlay System - Setting - System - Factory mode (The password is 8818) - Factory setting



设置完成需要点击 Apply - Sync, 然后返回到下图界面, 点击Reboot重启系统, 等待系统重启完成后, 所选设置生效
After the setting is complete, you need to click Apply-Sync, and then return to the interface below, click Reboot to restart the system, and wait for the system to restart, the selected settings will take effect



- 安手机互联关闭
Android phone interconnection is off
- 百度 CarLife 互联
Baidu CarLife interconnected
- GooglePlay手机互联
GooglePlay interconnected



- iPhone CarPlay 互联关闭
iPhone CarPlay interconnected is off
- iPhone CarPlay 有线连接
iPhone CarPlay wired connection
- iPhone CarPlay 无线连接
iPhone CarPlay wireless connection